



Vlaanderen
is maritiem



Notices to Mariners

AGENCY
**MARITIME and
COASTAL SERVICES**

No. 23
5 NOVEMBER 2020
NOTICES: 304 - 317
www.flemishhydrography.be

Published by: Administrator General Nathalie Balcaen
IAA Maritime and Coastal Services (MSC)
Brussels 2020

© Flemish Government

Compiled by: Coastal Division - Flemish Hydrography
Vrijhavenstraat 3
8400 Oostende
Belgium

Reproduction of data from this publication is allowed provided the full acknowledgment is displayed: "MSC – Coastal Division – Flemish Hydrography".

© Photography: Coastal Division Design:
Printing Office Lowyck Ostend

This is a free translation of the official "Berichten aan Zeevarenden, nr. 23 jaargang 2020"
In case of dispute the Dutch text is the only valid copy.

General guidelines concerning the use of the Belgian NtM are described in the annual edition no. 1 of the Belgian Notices to Mariners.

Positions are given in the reference system World Geodetic System 84 (WGS84). Incorrect interpretation of the reference system can lead to errors in the position of several hundred of metres.

Depths (in metres): are reduced to Lowest Astronomical Tide (LAT) for tidal areas and to local dock datum for non-tidal areas.

Heights (in metres): drying heights are above LAT. Vertical clearance is above Mean High Water Spring (MHWS). Other heights are above Mean Sea Level (MSL). Heights for non-tidal areas are above local dock datum.

Directions, bearings, leading lines and light sectors (in degrees) are true reckoned from seawards.

AGENCY
MARITIME and
COASTAL SERVICES

The Coastal Division is ISO9001
and ISO14001 certified (version
2015).

GENERAL NOTICES

2020-23/304(T) SHORE BASED PILOTAGE (LOODSEN OP AFSTAND (LOA)) IN THE EVENT OF STORM PILOTAGE - TEMPORARY ADDITIONAL CONDITIONS - EXTENDED

NtM 2020-19/284(T) is cancelled.

Ref.: NtM 2020-12/215(T).

In connection with the continuation of the corona pandemic, it is necessary to extend the duration of the measures taken to reduce the chances of spreading the corona virus.

Therefore, the Bass 063-2020 (incl. annexes) "Additional conditions in connection with the outbreak of the corona virus on GB 03-2018 - Shore base pilotage in the event of storm pilotage" is extended until 31 March 2021.

This announcement is in force until 31 March 2021.

Source: GNA Bass 122-2020

2020-23/305(T) MEASURES COVID-19 CORONA VIRUS IN THE GNB MANAGEMENT AREA - SCHELDT PORTS - BELGIAN COASTAL PORTS - EXTENDED

NtM 2020-19/285(T) is cancelled.

Ref.: NtM 2020-16/256(T).

In connection with the continuation of the corona pandemic, it is necessary to extend the duration of the measures taken to reduce the chances of spreading the corona virus.

Therefore, the Bass 083-2020 (incl. annexes) "Measures in connection with COVID-19 Corona virus" has been extended until 31 March 2021.

This announcement is in force until 31 March 2021.

Source: GNA Bass 122-2020

2020-23/306 SHIPPING REGULATIONS WESTERN SCHELDT - CLARIFICATION

The following clarification of article 9, fourth paragraph under c and article 13 of the Shipping Regulations Western Scheldt (SRW) is announced:

- the articles as worded in the SRW must be followed;
- in situations where ships deviate from the (main) fairway or leave the fairway, the vessel leaving the fairway must take the initiative to notify the vessels concerned;
- ships that overtake must contact the ship to be overtaken in good time so that in case of doubt, speed can still be reduced without endangering safety;
- traffic management should monitor proactively.

Source: GNA Bass 120-2020 - GB 04-2020

2020-23/307 WESTERN SCHELDT: LIMIT OF PARALLEL ROUTES ALONG THE MAIN FAIRWAYS - CORRECTION OF NTM NO 1

NtM 2020-01/25 replaced by:

1/25 WESTERN SCHELDT: LIMIT OF PARALLEL ROUTES ALONG THE MAIN FAIRWAYS

NtM 2020-01/25 modified by NtM 2020-23/307.

NtM 2019-1/14B is cancelled.

Article 1. General:

- a- Parallel routes next to the main fairways are additional routes primarily intended for inland vessels and recreational shipping and are fairways in the sense of art. 2 paragraph 2, part d of the Shipping Regulations Western Scheldt 1990 and belong to art. 2 (main fairways) of the Joint Notification "Fairway - Main fairways - Secondary fairways".
- b- The names for the parallel routes along the main fairways start with the letter "F" (for "Fietspad") followed by the number of the nearest lateral marking and are marked with special markings in accordance with the IALA recommendations.
- c- The designation of the main and secondary fairways is made in the Joint Notification "Fairway - Main fairways - Secondary fairways" in the management area of the Common Nautical Management", dealing with this subject and has no influence on the priority situation.
- d- Where it is safe and feasible to do so, and in accordance with art. 9, paragraph 1 of the Shipping Regulations Western Scheldt 1990, shipping in the parallel routes must navigate in the same direction as shipping in the laterally marked main fairway.
- e- If good seamanship so requires, part d may be derogated from in order to avoid unsafe situations.

Article 2. The following parallel routes are situated along the main fairway:

- a- Between the Braakmanhaven and the Hoek van Ossensisse, the "Fietspad" will be marked by:
 - 1- On the red side of the main fairway F14 - F16 - F18 - F20 - F20A - F22 - F24 - F26 - F28 - F28A - F28B - F30 - F32 - F34.
 - 2- On the green side of the main fairway F31 - F33 - F35 - F37.
- b- Between Hansweert and Perkpolder, the "Fietspad" will be marked by:
 - 1- On the red side of the main fairway F42 - F42A - F44 - F46 - F48 - F48A.
 - 2- On the green side of the main fairway F47 - F49 - F51 - F53 - F53A - F55.
- c- At Konijnenschor, the "Fietspad" will be marked by F58 - F60 - F62 - F64A - F64B - F66.

Article 3. Entry into force:

This NtM article (Joint Notification 05-2020) enters into force on 1 November 2020.

NtM 2020-1/25 (GNA Joint Notification 01-2016) is cancelled upon that entry into force.

This notification shall be published in the Official Gazettes of the Netherlands and Belgium.

Explanation.

It is reiterated to the fairway user that the principle of good seamanship as described in article 3 of the Shipping Regulations Western Scheldt 1990 is and continues to be of great importance.

Although the naming could possibly suggest otherwise, the status of main or secondary fairway has nothing to do with the right of priority.

Parallel routes are additional routes, indicated by marks having a special meaning in accordance with the IALA-A recommendations, which are adjacent to and run parallel with the laterally marked main fairway and belong to art. 2 of the Joint Notification "Fairway - Main fairways - Secondary fairways". Article 6, paragraph 2 of the Shipping Regulations Western Scheldt 1990 therefore applies in full.

Source: GNA - Bass 121-2020 - GB 05-2020

FRANCE**2020-23/308 FRANCE - APPROACH DUNKERQUE - DYCK EAST - RUYTINGEN EAST - OBSTRUCTIONS - CHART CORRECTION**

Charts: 102 (INT 1480), D11

Insert:

- Obstruction with safe depth 19,5 m in position 51°14,94'N 002°16,53'E.
- Obstruction with unknown depth in position 51°06,85'N 002°24,14'E.
- Obstruction with safe depth 8,8 m in position 51°10,88'N 002°21,40'E.

Delete:

- AIS in position 51°09,96'N 002°22,27'E.

Source: SHOM AAN 20 44 33

BELGIUM**2020-23/309 PORT OF OOSTENDE - HALVE MAANDIJK - VUURTORENDOK - CHART CORRECTION**

Charts: 102 (INT 1480), D11, 107/ABCD

Insert accompanying block.

Pay attention to the scale when printing, see printer settings.

Source: Vlaamse Hydrografie

2020-23/310 CANAL GHENT-TERNEUZEN - VHF CHANNELS - CHART CORRECTION

Charts: 105/01, 105/02, 105/03, 105/04, 105/05, 105/06, 105/07, 105/08, 105/09, 105/10

105/01

Change the magenta text "VHF 78 Port Control" and "VHF 78 Havenkanaal" in position 51°06,86'N 003°43,20'E to "VHF 11 Port Control".

Add the magenta text "Meldplicht binnenvaart VHF 78" in positions:

51°05,32'N 003°43,80'E

51°06,12'N 003°43,60'E

Change the magenta text "VHF 11 "Havendienst Gent" + "Uitkijk Zelzate"" in position 51°06,85'N 003°43,65'E to "VHF 11: "North Sea Port"".

105/02

Change the magenta text "VHF 78 Port Control" and "VHF 78 Havenkanaal" in position 51°08,17'N 003°44,90'E to "VHF 11 Port Control".

Change the magenta text "VHF 11 "Havendienst Gent" + "Uitkijk Zelzate"" in position 51°08,25'N 003°44,95'E to "VHF 11: "North Sea Port"".

105/03

Change the magenta text "VHF 78 Port Control" and "VHF 78 Havenkanaal" in position 51°10,30'N 003°45,95'E to "VHF 11 Port Control".

Add the magenta text "Meldplicht binnenvaart VHF 78" in position 51°08,27'N 003°46,92'E.

Change the magenta text "VHF 11 "Havendienst Gent" + "Uitkijk Zelzate"" in position 51°10,38'N 003°45,95'E to "VHF 11: "North Sea Port"".

105/04

Change the magenta text "VHF 78 Port Control" and "VHF 78 Havenkanaal" in position 51°11,28'N 003°48,74'E to "VHF 11 Port Control".

Change the magenta text "VHF 11 "Havendienst Gent" + "Uitkijk Zelzate"" in position 51°11,23'N 003°48,58'E to "VHF 11: "North Sea Port"".

105/05

Change the magenta text "VHF 78 Port Control" and "VHF 78 Havenkanaal" in position 51°11,80'N 003°47,36'E to "VHF 11 Port Control".

Change the magenta text "VHF 11 "Havendienst Gent" + "Uitkijk Zelzate"" in position 51°11,71'N 003°47,45'E to "VHF 11: "North Sea Port"".

105/06

Add the magenta text "VHF 11 Port Control" in position 51°13,37'N 003°49,10'E.

Change the magenta text "VHF 11 "Havendienst Terneuzen"" in position 51°13,44'N 003°49,20'E to "VHF 11: "North Sea Port"".

105/07

Add the magenta text "VHF 11 Port Control" in position 51°16,39'N 003°48,98'E.

Change the magenta text "VHF 11 "Havendienst Terneuzen"" in position 51°16,47'N 003°49,06'E to "VHF 11: "North Sea Port"".

105/08

Add the magenta text "VHF 11 Port Control" in position 51°17,78'N 003°49,52'E.

Change the magenta text "VHF 11 "Havendienst Terneuzen"" in position 51°17,85'N 003°49,60'E to "VHF 11: "North Sea Port"".

105/09

Add the magenta text "VHF 11 Port Control" in position 51°17,94'N 003°48,98'E.

Change the magenta text "VHF 11 "Havendienst Terneuzen"" in position 51°18,00'N 003°49,07'E to "VHF 11: "North Sea Port"".

Add the magenta text "Meldplicht binnenvaart VHF 78" in position 51°19,39'N 003°49,03'E.

105/10

Add the magenta text "VHF 11 Port Control" in position 51°19,66'N 003°48,37'E.

Change the magenta text "VHF 11 "Havendienst Terneuzen"" in position 51°19,73'N 003°48,43'E to "VHF 11: "North Sea Port"".

Add the magenta text "Meldplicht binnenvaart VHF 78" in position 51°19,66'N 003°49,20'E.

Source: North Sea Port

2020-23/311 CANAL GHENT-TERNEUZEN - RIEME - ALL WEATHER TERMINAL - CHART CORRECTION

Charts: 105/04

Insert accompanying block.
Pay attention to the scale when printing, see printer settings.

Source: Vlaamse Hydrografie

2020-23/312(T) LOWER SEA SCHELDT - NOORDZEETERMINAL - TEMPORARY MOORING PROHIBITION QUAY S913

Charts: 104/05, 106 (INT 1478)

There is a temporary mooring prohibition at the Noordzeeterminal at quay S913 between mooring post 56 and 58. The mooring prohibition is for all shipping until Sunday 22 November 2020, longer or shorter in duration depending on progress of the works.
Pass the working area with moderate speed and necessary caution. Under passage is prohibited.

Source: Haven Antwerpen NPA 20/502

2020-23/313 PORT OF ANTWERPEN - ALBERTDOK - ALL WEATHER TERMINAL - CHART CORRECTION

Charts: 104/03, 104/04, 106 (INT 1478)

104/03-104/04

Insert:

Text "All Weather Terminal" in black in position 51°15,09'N 004°23,99'E.
Black symbol INT1 "ID22" with height of 21 m in position 51°15,13'N 004°24,17'E.

106 panel A

Insert:

Text "All Weather Terminal" in black in position 51°15,09'N 004°23,76'E.
Black symbol INT1 "ID22" with height of 21 m in position 51°15,13'N 004°24,17'E.

Source: Vlaamse Hydrografie

THE NETHERLANDS

2020-23/314 CANAL GHENT-TERNEUZEN - TERNEUZEN - WEST-BUITENHAVEN - GOESE KADE - DELETE MOORING POSTS - CHART CORRECTION

Charts: 104/09, 105/09, 105/10

Delete mooring posts (INT1 F22) in following positions:

51°20,31'N 003°48,44'E
 51°20,24'N 003°48,49'E
 51°20,20'N 003°48,52'E
 51°20,16'N 003°48,55'E
 51°20,13'N 003°48,58'E
 51°20,09'N 003°48,61'E
 51°20,03'N 003°48,66'E
 51°19,46'N 003°49,14'E
 51°19,43'N 003°49,17'E

Delete berths (INT1 F19.1):

"1" in position 51°19,46'N 003°49,16'E
 "3" in position 51°19,43'N 003°49,18'E

Source: NLHO NtM 2020-44/316

2020-23/315(T) WESTERN SCHELDT - STRAATJE VAN WILLEM - SHOAL DEPTH

Charts: 104/09

Add sounding -0,1 m in position 51°22,35'N 003°54,83'E with a depth contour of 0 m around it.

Source: NLHO NtM 2020-44/318

2020-23/316 WESTERN SCHELDT - PAS VAN RILLAND - CHANGE OF BUOYAGE - CHART CORRECTION

Charts: 104/06, 106 (INT 1478), 104/05

Move:

Yellow spar "ZS 1" to position 51°22,57'N 004°12,78'E.

Source: GNA Bass 123-2020

**2020-23/317(T) CANAL GHENT-TERNEUZEN - TERNEUZEN - GOESE KADE - DELETE
DESIGNATION OF BERTHS**

Charts: 105/09, 105/10

105/09

Delete berths (INT1 F19.1):

"5" in position 51°19,39'N 003°49,18'E

"7" in position 51°19,34'N 003°49,22'E

"9" in position 51°19,30'N 003°49,25'E

"11" in position 51°19,26'N 003°49,28'E

105/10

Delete berths (INT1 F19.1):

"5" in position 51°19,40'N 003°49,21'E

"7" in position 51°19,34'N 003°49,25'E

"9" in position 51°19,31'N 003°49,28'E

Source: NLHO NIM 2020-44/315

MARITIME SAFETY INFORMATION (MSI)
in force

MSI > 19/664 TSS - WESTHINDER

TRIPODE WITH HYDROGRAPHICAL INSTRUMENT ESTABLISHED IN POS 51-22.867 N 002-27.162 E UNMARKED. SHIPPING IS REQUESTED NOT TO FISH AND TO PASS AT A SAFE DISTANCE .

MSI > 19/780 TSS - WESTHINDER

WESTHINDER MEASURING POLE, 51-23.31 N 002-26.26 E. LIGHT UNLIT .

LB > 20/039 PORT OF OOSTENDE

WATERBOND ACTIVITIES AT THE PIERHEADS OF THE HARBOR OF OOSTENDE . IN THE VICINITY OF THE HALVE MAAN. SHIPPING IS REQUESTED TO PASS WITH REDUCED SPEED IN ORDER TO AVOID EXCESSIVE WAVES.

LB > 20/050 DE PANNE - OOSTENDE

LIGHTBUOY WHITLEY, 51-09.15 N 002-39.44 E. TOPMARK MISSING .

LB > 20/052 PORT OF BLANKENBERGE

SHALLOW PATCHES REPORTED AT LOW TIDE . IN THE PORT ENTRANCE OF BLANKENBERGE. SHIPPING IS REQUESTED TO PASS WITH CAUTION. FOR MORE INFORMATION CONTACT MRCC OSTEND COASTGUARD CH 67.

MSI > 20/283 BLIGHBANK - THORNTONBANK

LIGHTBUOY VLIZ, 51-34.80 N 002-59.59 E. TEMPORARILY REMOVED .

MSI > 20/342 OOSTDYCK - KWINTE

OOSTDYCK ANCHORAGE. M/V LISA. ANCHOR LOST IN POS 51-19.41 N 002-37.43 E.

MSI > 20/421 DE PANNE - OOSTENDE

SPECIAL PURPOSE BUOY O, 51-14.28 N 002-52.09 E. TEMPORARILY REMOVED .

MSI > 20/439 OOSTENDE - ZEEBRUGGE

UNDERWATER PIPELINE AND FLOATING PIPELINE ESTABLISHED BETWEEN POSITIONS 51-15,47 N 002-58,40 E AND 51-15,79 N 002-58,14 E MARKED BY CARDINAL BUOY 'DC1'. SHIPPING IS REQUESTED NOT TO ANCHOR NOR TO FISH ABOVE THIS PIPELINE AND TO PASS CLEAR OF IT

MSI > 20/442 TSS - NOORDHINDER SOUTH

FISHING VESSEL DROPPED AIRCRAFT ORDNANCE. IN POS 51°32,019 N - 002°24,28 E. SHIPPING IS REQUESTED NOT TO ANCHOR NOR TO FISH IN THE VICINITY..

MSI > 20/525 BE EEZ

EXPLOSIVE IN POS 51° 25,58 N 002° 31,46 E. SHIPPING IS REQUESTED NOT TO ANCHOR NOR TO FISH IN THE VICINITY..

MSI > 20/528 BE EEZ

EXERCISE MINES TEMPORARY LAID OUT. ON 14 SEP 2020. IN THE FOLLOWING POSITIONS :

51-27.387 N 002-43.012 E

51-27.799 N 002-42.455 E

51-28.148 N 002-43.114 E

51-27.736 N 002-43.672 E

SHIPPING IS REQUESTED NOT TO ANCHOR NOR TO FISH IN THESE POSITIONS.

MSI > 20/558 TSS - WESTHINDER

M/V WANDELAAR. ANCHOR LOST IN POS 51-19.314 N 002-47.342 E.

MSI > 20/590 APPROACH BLANKENBERGE

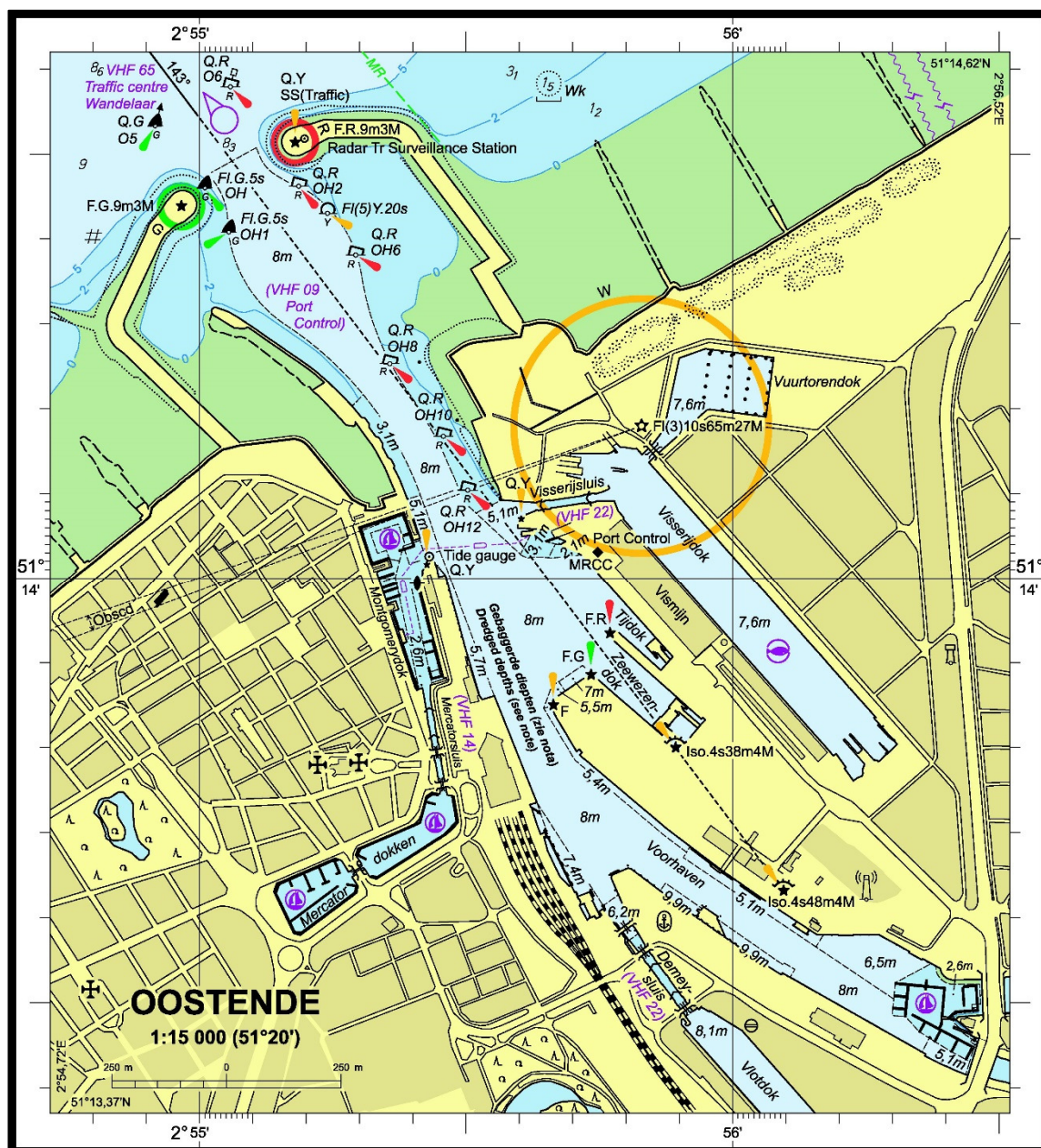
BLANKENBERGE EASTERN HARBOUR LIGHT, 51-18.91 N 003-06.56 E. LIGHT UNLIT.

MSI > 20/592 DE PANNE - OOSTENDE

AN UNDERWATERPIPELINE WITH FLOATING PIPELINE ESTABLISHED BETWEEN POSITIONS 51-12.891 N 002-52.340 E AND 51-13.375 N 002-51.655 E. SHIPPING IS REQUESTED NOT TO ANCHOR NOR TO FISH ABOVE THIS PIPELINE

MSI > 20/602 WIELINGEN

LIGHTBUOY A1, 51-22.37 N 002-53.34 E. LIGHT UNLIT .



105/04

