



Vlaanderen
is maritiem



Notices to Mariners

AGENCY
**MARITIME and
COASTAL SERVICES**

No. 03
4 FEBRUARY 2021
NOTICES: 094 - 103
www.flemishhydrography.be

Published by: Administrator General Nathalie Balcaen
IAA Maritime and Coastal Services (MSC)
Brussels
2021

© Flemish Government

Compiled by: Coastal Division - Flemish Hydrography
Vrijhavenstraat 3
8400 Oostende
Belgium

Reproduction of data from this publication is allowed provided the full acknowledgment is displayed: "MSC – Coastal Division – Flemish Hydrography".

© Photography: Coastal Division Design:
Design: Printing Office Lowyck Ostend

This is a free translation of the official "Berichten aan Zeevarenden, nr. 03 jaargang 2021"
In case of dispute the Dutch text is the only valid copy.

General guidelines concerning the use of the Belgian NtM are described in the annual edition no. 1 of the Belgian Notices to Mariners.

Positions are given in the reference system World Geodetic System 84 (WGS84). Incorrect interpretation of the reference system can lead to errors in the position of several hundred of metres.

Depths (in metres): are reduced to Lowest Astronomical Tide (LAT) for tidal areas and to local dock datum for non-tidal areas.

Heights (in metres): drying heights are above LAT. Vertical clearance is above Mean High Water Spring (MHWS). Other heights are above Mean Sea Level (MSL). Heights for non-tidal areas are above local dock datum.

Directions, bearings, leading lines and light sectors (in degrees) are true reckoned from seawards.

AGENCY
MARITIME and
COASTAL SERVICES

The Coastal Division is ISO9001
and ISO14001 certified (version
2015).

GENERAL NOTICES

2021-03/094 NIEUWPOORT: SEAWARD FIRING PRACTICE - SMALL, MEDIUM AND LARGE AREA - CORRECTION NTM NO. 1

Replace the last paragraph in the text of NtM 2021-01/67 by:

This information will be updated on a daily basis. It is also possible to contact the firing range in Nieuwpoort by phone at +32 (0)58 23 64 60.

Source: Ministerie van Defensie - Nieuwpoort

BELGIUM

2021-03/095(T) WINDFARMS - MERMAID - TEMPORARY WORKING AREA

NtM 2021-02/081(T) is cancelled.

The working area of the Mermaid windfarm remains temporarily in force.
The coordinates are the following:

51°43,05'N 002°47,76'E
51°43,92'N 002°46,49'E
51°44,64'N 002°45,26'E
51°44,11'N 002°42,45'E (west cardinal buoy OHR7)
51°42,25'N 002°41,40'E (virtual AtoN OHR5 - MMSI 992051028)
51°41,20'N 002°42,37'E

The access to such a working area is forbidden, except in specific cases such as mentioned in the Royal Decree of 4 February 2020. Moreover, it is recommended to navigate well outside the limits of this zone.

Source: Vlaamse Hydrografie

2021-03/096(T) WINDFARMS - SEASTAR - WORKING AREA AND BUOYS

NtM 2019-10/148(T) is cancelled.

Charts: 101 (INT 1474), D11

The following light buoys are removed:

West cardinal buoy SEA W in position 51°36,71'N 002°48,61'E
South cardinal buoy SEA S in position 51°35,98'N 002°50,74'E

The following light buoys remain temporarily established:

North cardinal buoy SEA N, Q, in position 51°40,06'N 002°52,72'E
East cardinal buoy SEA E, Q(3)10s, in position 51°38,99'N 002°54,50'E

The working area is still in force and is bounded by a line joining:
the buoys SEA-N, SEA-E and the positions 51°35,98'N 002°50,74'E, 51°36,71'N 002°48,61'E.

The access to such a working area is forbidden, except in specific cases such as mentioned in the Royal Decree of 4 February 2020. Moreover, it is recommended to navigate well outside the limits of this zone.

Source: MRCC MSI 044/21, 045/21

2021-03/097 PORT OF OOSTENDE - HALVE MAANDIJK - VISSERIJSLUIS - MONTGOMERYDOK - CHART CORRECTION

Charts: 102 (INT 1480), D11, 107/ABCD

Insert accompanying block.
Pay attention to the scale when printing, see printer settings.

Source: Vlaamse Hydrografie

2021-03/098(T) KANAAL GENT-TERNEUZEN - MOERVAART - TEMPORARY DAM WALL**Charts:** 105/03

There is a limited mooring area of 16 m in the Moervaart at quays 4580-4590 from mooring posts 64 to 74.

At the height of the outflow construction at the Rodenhuizekaai, a temporary dam wall with berm has been placed at 4m from the quay.

There is an area with works in progress in the following positions:

51°08,38'N 003°46,70'E

51°08,39'N 003°46,70'E

51°08,37'N 003°46,76'E

51°08,37'N 003°46,75'E

Source: GNA Bass 006-2021

2021-03/099(T) BENEDEN-ZEESCHELDE - VAN CAUWELAERTSLUIS - BROKEN GREEN HARBOUR LIGHT**Charts:** 104/04, 106 (INT 1478)

The pile with light F.G in position 51°16,75'N 004°19,38'E is temporarily deleted.

A yellow can light buoy with lying cross as topmark and light character Fl.Y, is temporarily established in position 51°16,75'N 004°19,37'E.

Source: GNA Bass 008-2021

2021-03/100(T) BENEDEN-ZEESCHELDE - FORT FILIP - TEMPORARY BUOYS**Charts:** 104/04, 106 (INT 1478)

To demarcate a breakwater, the buoys remain temporarily in place.

The 4 yellow spar buoys with a lying cross as topmark and light character Q.Y, are in the following positions:

F1 51°15,45'N 004°18,38'E

F2 51°15,54'N 004°18,24'E

F3 51°15,90'N 004°18,34'E

F4 51°16,08'N 004°18,57'E

Source: GNA; De Vlaamse Waterweg

2021-03/101 BENEDEN-ZEESCHELDE - FORT FILIP - BREAKWATER - CHART CORRECTION**Charts:** 104/04, 106 (INT 1478)

Insert accompanying blocks.

Pay attention to the scale when printing, see printer settings.

Source: De Vlaamse Waterweg

THE NETHERLANDS

2021-03/102(T) WESTERSCHELDE - PAS VAN TERNEUZEN - SHOAL DEPTH

Charts: 104/09

A shallow depth of 13,7 m has been established in the Pas van Terneuzen between buoys 12 and 12A in position 51°21.99'E 003°45.41'E.

Source: GNA Bass 009-2021

2021-03/103 WESTERSCHELDE - WALSOORDEN-VALKENISSE - SCHAAR VAN VALKENISSE - CHANGE OF BUOYS - CORRECTION OF CHART AND LIST OF LIGHTS

Charts: 104/07, 106 (INT 1478)

List of Lights

Delete:

Light buoy SvV Z (LL nat. no. 0801.5)

Light buoy SvV C (LL nat. no. 0801.6)

Ton F 60

Ton F 60A

Insert:

Yellow conical light buoy SvV Z in position 51°22,35'N 004°05,93'E, light character Fl.Y.5s (LL nat. no. 0801.5)

South cardinal buoy "Valkenisse" in position 51°22,34'N 004°06,24'E, light character Q(6)+LFl.15s (LL nat. no. 0801.6)

Ton F 58 in position 51°22,34'N 004°06,51'E

Ton F 60 in position 51°22,41'N 004°07,16'E

Move:

Light buoy SvV Y to position 51°22,69'N 004°05,83'E (LL nat. no. 0801.3)

Light buoy SvV B to position 51°22,73'N 004°06,01'E (LL nat. no. 0801.4)

Source: GNA Bass 134-2020

MARITIME SAFETY INFORMATION (MSI)
in force

LB > 20/052 PORT OF BLANKENBERGE

SHALLOW PATCHES REPORTED AT LOW TIDE . IN THE PORT ENTRANCE OF BLANKENBERGE. SHIPPING IS REQUESTED TO PASS WITH CAUTION. FOR MORE INFORMATION CONTACT MRCC OSTEND COASTGUARD CH 67.

LB > 20/062 TSS-NOORDHINDER SOUTH

LIGHTBUOY GARDEN CITY, 51-29.12 N 002-17.92 E. TOPMARK MISSING .

MSI > 20/525 BE EEZ

EXPLOSIVE IN POS 51°- 25,58 N 002°- 31,46 E. SHIPPING IS REQUESTED NOT TO ANCHOR NOR TO FISH IN THE VICINITY..

MSI > 20/528 BE EEZ

EXERCISE MINES TEMPORARY LAID OUT. ON 14 SEP 2020. IN THE FOLLOWING POSITIONS :

. 51-27.387 N 002-43.012 E
. 51-27.799 N 002-42.455 E
. 51-28.148 N 002-43.114 E
. 51-27.736 N 002-43.672 E.

SHIPPING IS REQUESTED NOT TO ANCHOR NOR TO FISH IN THESE POSITIONS.

MSI > 20/558 TSS-WESTHINDER

M/V WANDELAAR. ANCHOR LOST IN POS 51-19.314 N 002-47.342 E.

MSI > 20/590 APPROACH BLANKENBERGE

BLANKENBERGE EASTERN HARBOUR LIGHT, 51-18.91 N 003-06.56 E. LIGHT UNLIT .

MSI > 20/623 VLAAMSE BANKEN ROUTE

TRIPODE WITH HYDROGRAPHICAL INSTRUMENT ESTABLISHED IN POS 51-16.45 N 002-26.88 E UNMARKED. SHIPPING IS REQUESTED NOT TO FISH AND TO PASS AT A SAFE DISTANCE .

MSI > 20/634 DYCK ROUTE

LIGHTBUOY MIDDELKERKEBANK, 51-18.20 N 002-42.75 E. LIGHT UNLIT .

MSI > 20/659 TSS-WESTHINDER

LIGHTBUOY H12, 51-22.95 N 002-26.16 E. LIGHT UNLIT .

MSI > 21/028 VAARGEUL 1

LIGHTBUOY VG2, 51-25.95 N 002-48.12 E. RA: INACTIVE .

MSI > 21/037 SEAAREA (COAST)

AN UNDERWATERPIPELINE WITH FLOATING PIPELINE ESTABLISHED BETWEEN POSITIONS 51-12.891 N 002-52.340 E AND BUOY 'JDN' IN POS. 51-13.60 N 002-51.40 E.

AN UNDERWATERPIPELINE WITH FLOATING PIPELINE ESTABLISHED BETWEEN POSITIONS 51-15.470 N 002-58.400 E AND BUOY 'DC1' IN POS. 51-15.91 N 002-57.94 E.

SHIPPING IS REQUESTED NOT TO ANCHOR NOR TO FISH ABOVE THIS PIPELINE

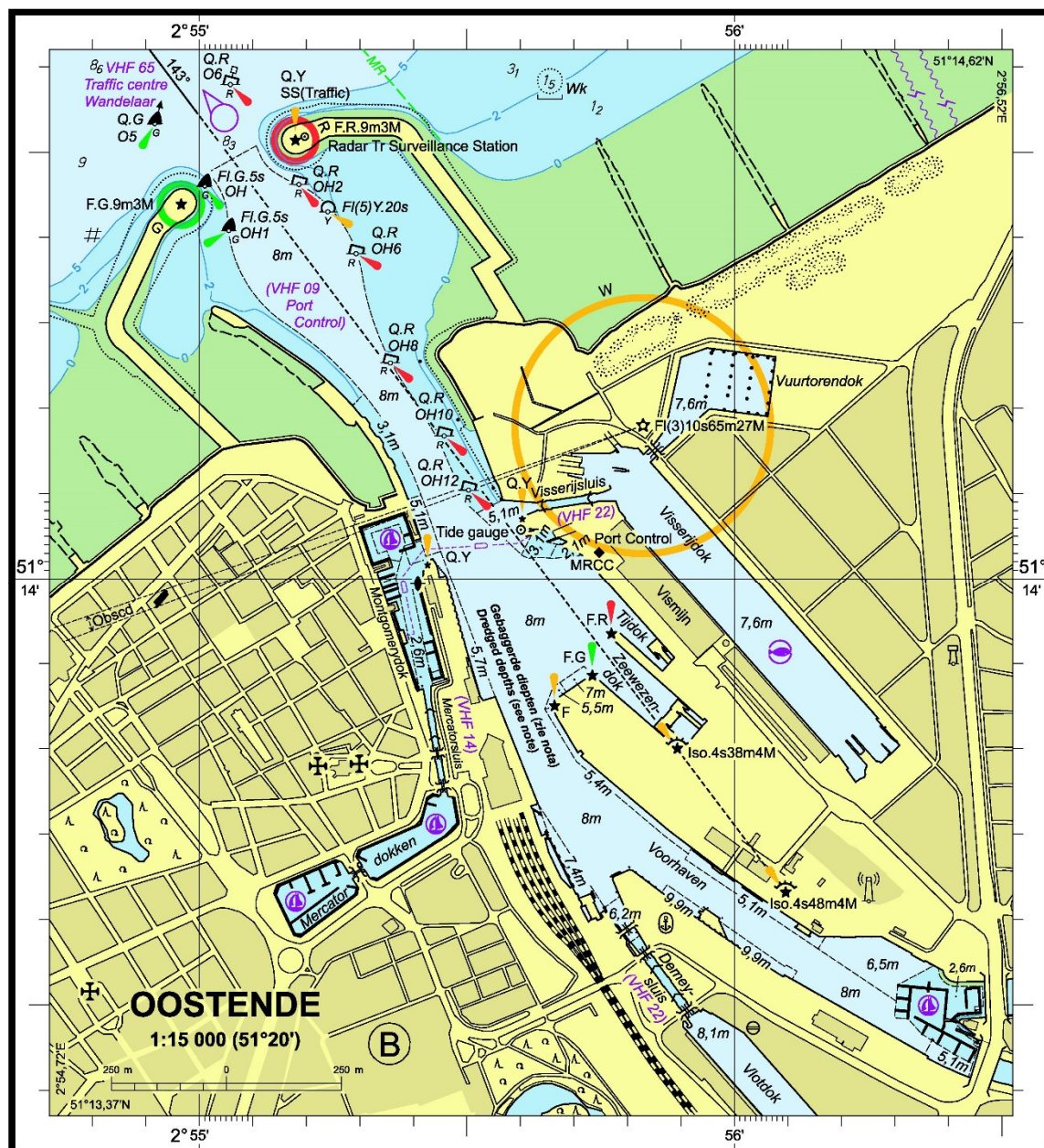
MSI > 21/041 WIELINGEN

LIGHTBUOY AW1, 51-21.50 N 003-02.59 E. LIGHT UNLIT .

MSI > 21/048 SCHEUR

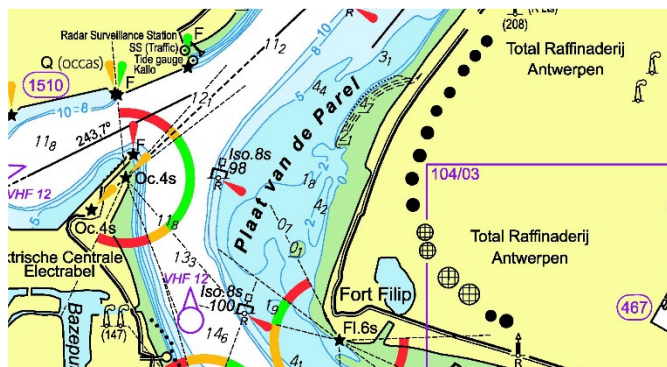
LIGHTBUOY S2, 51-23.37 N 002-58.09 E. LIGHT UNLIT .

Image size 151,3 x 166,2 mm.



Attachment to NtM 2021-03/101 for chart 104/04

Image size 87,8 x 48,2 mm. $\lfloor 51^{\circ}15,40'N \ 004^{\circ}17,28'E \rfloor 51^{\circ}16,18'N \ 004^{\circ}19,55'E$



Attachment to NtM 2021-03/101 for chart 106 Panel A

Image size 84,1 x 46,4 mm. $\lfloor 51^{\circ}15,39'N \ 004^{\circ}17,26'E \rfloor 51^{\circ}16,15'N \ 004^{\circ}19,43'E$

